



44310 LA LIMOUZINIÈRE - FRANCE

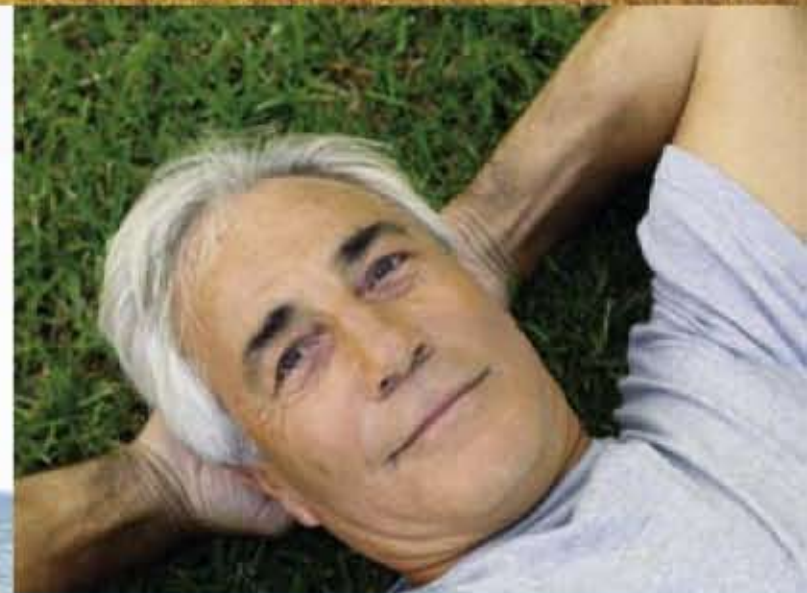
product 2008
catalogue

PILOTE est une marque déposée de la société PILOTE HABITAT, 44310 LA LIMOUZINIÈRE, FRANCE. Toute réimpression ou utilisation non autorisée sans la permission écrite de la société PILOTE HABITAT est formellement interdite. Toute reproduction ou utilisation non autorisée sans la permission écrite de la société PILOTE HABITAT est formellement interdite. Toute réimpression ou utilisation non autorisée sans la permission écrite de la société PILOTE HABITAT est formellement interdite.





SURROUNDING
YOU WITH
THE COMFORT
OF TOMORROW



By listening to our customers, observing how they live, gathering their opinions and evaluating their expectations, we are consistently able to optimize our selection of recreational vehicles. For this reason, we have incorporated the latest innovations available in the motor home industry, to provide our customers with the best in comfort, convenience, and quality of life..





THE AMENITIES OF TOMORROW

A LIVING ROOM THAT FEELS LIKE HOME

Discover the REFERENCE Range's new interior décor: a coordinated floor-to-ceiling design that creates a warm, inviting, unique ambiance. Your living space will feel just like home.



THE STYLE OF TOMORROW

LUXURY AND SOPHISTICATION COME TOGETHER
IN THE EXPLORATEUR'S LIVING ROOM

The Explorateur will tempt you
with the refined furnishings and rich colors
of its marine-inspired interior..



THE COMFORT OF TOMORROW

LARGE MASTER BED IN THE AVENTURA, REFERENCE AND EXPLORATEUR

Because the size and quality of the sleeping arrangements is a priority for users, all PILOTE motor homes are furnished with beds that are a full 2 m in length. With this dedicated approach to motor home comfort, Pilote has created a master bed, for its FC versions, that is as cozy as a real bedroom.



THE DESIGN
OF TOMORROW

NEW **Explorateur** G830

Discover comfort and sophistication in the version XXL of the new A-class with twin rear axle. And don't miss the Explorateur with its new design, a motor home that is as easy on the eye as it is on the road.



INNOVATIONS OF TOMORROW

The dual panel insulation system is an exclusive PILOTE design concept. All motor homes are equipped with heated, insulated double-panels to protect the cabin from cold and prevent water reserves from freezing. Full width storage bins provide owners with a large storage capacity, an added advantage when travelling a long distance!



DPR DOUBLE FLOOR ORGANIZATION SYSTEM
ON THE FIAT AL-KO EXPLORATEUR RANGE

DPS DOUBLE PANEL INSULATION SYSTEM
FOR ALL THE REFERENCE RANGE



Explorateur

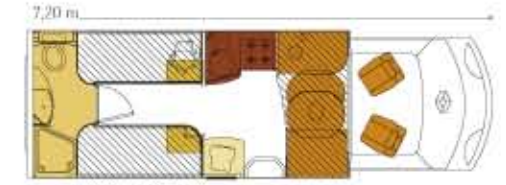
THE ULTIMATE EXPERIENCE



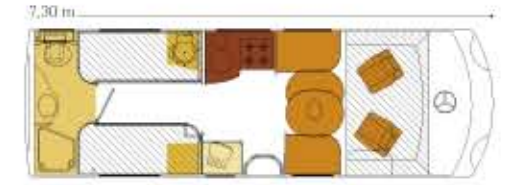
Ingenious design, exceptional sleeping arrangements, sizeable capacities, refined finishing, quality materials - At PILOTE, we have the motorists' best interests in mind. After all, you are the ones exploring the roads, the planet, your dreams.



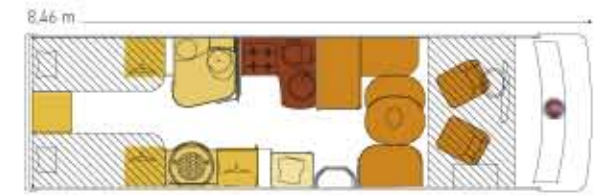
Explorateur



P715FJ



G733FJ



G830LGJ



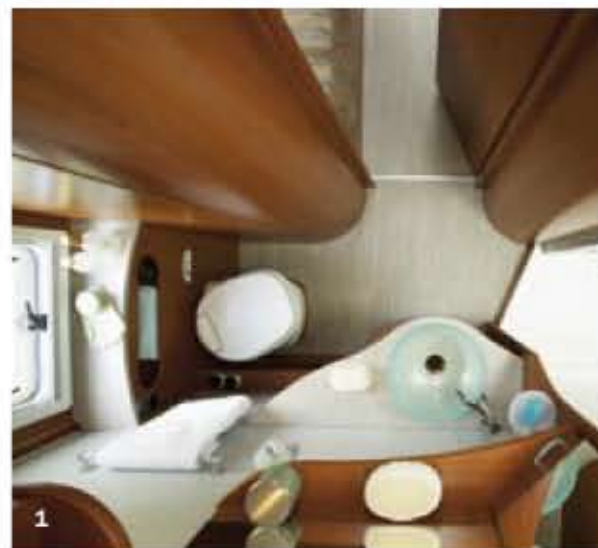
1 - Comfort is a luxury, and the Explorateur delivers, with its two separate beds in the bedroom of the P715 FJE and full width bathroom at the rear. .



2 - 2 travelling seats equipped with 2x3-point seatbelts. When parked, living space comfortably accommodates 4 people.

3 - The Galaxy 830 LGJ on twin-axle AL-KO base : A luxury vehicle, in which comfort and storage take precedent : rear bunk beds (length: 2m) and spacious, independent wardrobes to accommodate all your storage needs.

4 - 5 - This model is not lacking in ingenuity: infinite storage capacity with a large compartment under the bunk beds, a vast wardrobe, and cupboard with sliding glass door holds drink glasses..



1



5



3

Explorateur



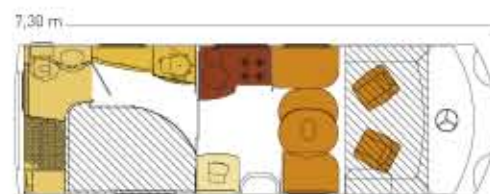
5 - G830: the «space shuttle» of the Explorateur range, this model will charm you with its panoramic living space; L-shaped floor plan and XXL bench seat. Storage cabinets can be replaced by an optional pull-down bed and integrated flat-screen TV. A 4-star living space for family or friendly gatherings.

6 - The Double Panel Organization system : The Explorateur range is now available on a twin-axle AL-KO chassis base (7.80m and 8.30m) with double floor storage compartments (height: 23cm). Easy access, double floor storage compartment in 4T5 Truck version.

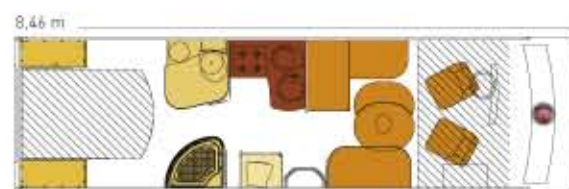
7 - The Double Panel Service : The DPS consists of two floors that heat and insulate reserves of water and other liquids. New skirt creates more cargo space for crosswise and lengthwise storage under the floor. Shoe box accessible from inside the motorhome.

1 - G733 FD : Night time : lengthwise bedroom with a spacious, full width bathroom at the rear - a design that is both innovative and practical. Bedroom with a large wardrobe and storage closet for the whole family.

2 à 4 - G733 FD : Daytime use : In an Explorateur kitchen you'll find the best equipment available : 4-burner gas hob + oven, 150 L refrigerator, extractor fan, stainless steel round sink, sliding drawer set... with a cherry wood-color finish



G733FD



G830LC



AL-KO

BODYWORK Explorateur



- 1 - New rear
- 2 - New side skirts with Double Floor side doors
- 3 et 5 - Garage accessible from both the inside and outside, Model G830 LGJ
- 4 - New rearview mirror
- 6 - New cab seats with integrated seatbelts ; seatbelts are easier to use and manipulate. Air Conditioning



- 7 - Sliding cargo bins integrated into side skirts
- 8 et 9 - FAVEX system allows you to heat the vehicle while driving.
- 10 - New Combi 6 combination heater/boiler

AMENITIES Explorateur



- 1 à 5 - Alde heating
- 6 - E4000 Heating system for G780 / G830
- 7 et 8 - DPR - DPS
- 9 - Entrance door
- 10 - CD/Radio + 2 speakers
- 11 et 12 - Rearview camera
- 13 - Carpeted cab
- 14 - Driver's side door (passenger for RHD)





REFERENCE

SURE TO TAKE YOU FURTHER

Why should you go further if your travel conditions are not the best of the best? Because the quality of life aboard a motor home is your first priority, REFERENCE re-invents comfort and ergonomics, in a modern interior décor. And because you enjoy the outside as much as the inside, PILOTE has redesigned the exterior of all its REFERENCE vehicles, and created a rear end design that is as comforting as it is attractive.



REFERENCE



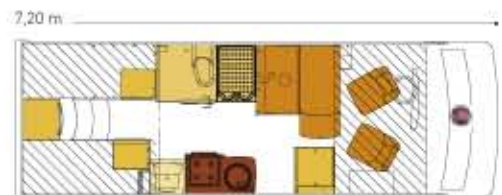
1 et 2 - G730 TJR : The Fiat A-class with rear bunkbeds, classic semi-dinette and front pull-down bed, independent storage compartments under the beds.

3 et 4 - G735 FDR : Dinette for two with forward seats, integrated forward facing seatbelts, permanent lengthwise rear bed, full-width rear bathroom; the ideal 4-person motor home, with 2x2 sleeping arrangements.

5 - New refrigerator unit in Reference vehicles.



G735FDR



G730TJR



REFERENCE

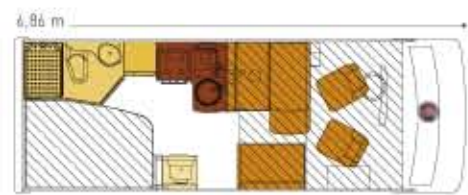
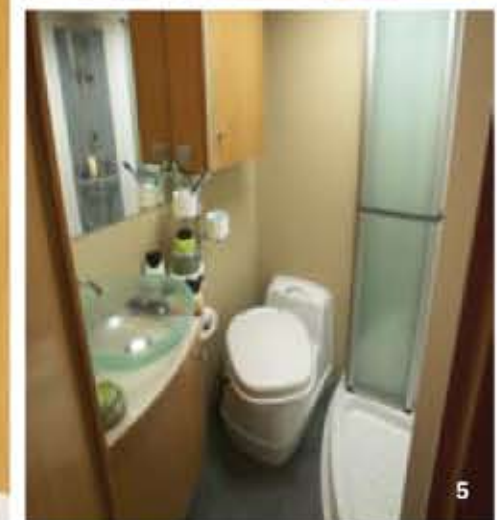


1 - The secret weapon of the Reference range: the P670 TPR : lengthwise bed and bathroom at the rear for night time accommodations, semi-dinette with sofa for daytime use.

2 et 5 - The P690 FGR includes all the comforts of a real bathroom with a large, separate shower, and a roomy kitchen with generous workspace. Integrated bathroom plus kitchen on all Garage versions.

3 - Maximized Front Living Space in the Reference G690 TP : accommodates up to 5 people, with its semi-dinette, its side bench seat and swiveling front seats.

4 - G685 FPR : Kitchen, New design with 4 burner gas hob and integrated oven, Practical and functional, with extensive storage : draining board, spice rack, extractor fan.



G690TPR

REFERENCE



1



2



1



3

1 - G730 DCR Galley : 4 burner gas hob with integrated oven, AES 150 L refrigerator, extractor fan, spice rack, ... separate and distinct day and night sections.
New furniture and kitchen cabinet design, gas hob.

2 - A-class overcab bed : pull-down bed (width: 140 cm), modern lighting and extensive storage capacity ; combining utility and innovation.

3 - G730 DCR Master bed : Comfort first ; feel at home in your recreational vehicle, with this master bed (length 2m). A divided storage compartment with large capacity is accessible under the master bed. The garages are equipped with adjustable, sliding hooks to hold bulky objects.

4 - New rear end design on the REFERENCE Range.

5 - New side skirts



4



5



REFERENCE



1



2



3

3



3



4



5



6



7



8

1 - In the F-shaped living spaces, all bench seats are equipped with 3-point seatbelts forward facing. When parked, bench seats become opposing sofas.

2 - Wardrobe G630T.

3 - Modular bathroom in the Galaxy 730 DG.

4 - Pacific dashboard by FIAT.

5 - Galaxy dashboard by Renault.

6 - Carpeted cab floor (all vehicles).

7 - New cab step on Pacific in the REFERENCE range.

8 - New skirts on the REFERENCE models with side and transversal access to storage compartments.



G730DGR

7.20 m



Aventura

BUILT TO FIT YOUR BEST MOMENTS

Family vacations, group outings ... Because your idea of a great scape includes friends, Aventura is here. Every amenity, every space, every convenience has been considered, so that each individual can fully enjoy their life and their hobbies. Whether you choose a coachbuilt, A-Class or profile, there are so many experiences to live in Aventura!



Aventura



1 - All AVENTURA coachbuilds are equipped with a front kitchen and double dinette : opposed seating arrangements allow you to share meals and play games face-to-face. The 2008 AVENTURA coachbuilt collection is the perfect family vehicle !

2 - Garage bed versions : built with a headboard, just like on your bed at home, practical for stacking books, your glasses, even your dreams...

3 - The garages are so spacious and easy to access that you can pack anything and everything you please !



4 et 5 - The combined bathroom/galley of the Garage versions now offer more space and more style : new handbasin, new shower module and bathroom décor. The kitchens in the FG versions : spacious and ergonomic, practical and functional, these are the words that best describe the new amenities in the P690 FG version. 3-burner cooker, 142 L refrigerator, sliding drawers, spice rack... nothing is left to fate in an AVENTURA kitchen !

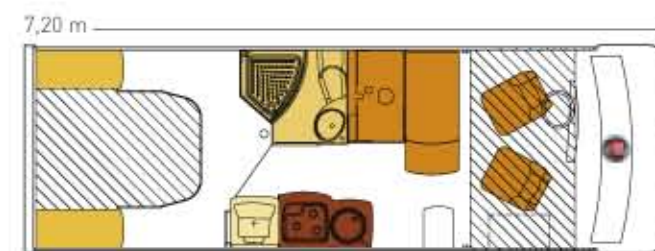


Aventura



1 - G730 DCA daytime use: Front living space accommodates 4, a warm ambiance with new interior décors (floor mats, cushions, valances, new lighting for dining...), and the classic comfort of the A-class.

2 - G730 DCA night time : The master bed in the AVENTURA range makes you feel as comfortable in your motor home as you do at home: PILOTE puts onboard comfort first! Large bed (length : 2m), just like in your bedroom at home!



G730DCA

3 - New Aventura refrigerator

4 - New driver's side door

5 - Full width locker on G730 are the perfect solution for storing your long, bulky objects



Aventura

1 et 2 - P670 TPA Galley : L-shaped kitchen is set-off to facilitate movement within the vehicle. 3-burner cooker, 142 L refrigerator, sliding drawers, mixer tap, spice rack... a very practical, very functional kitchen for preparing delicious meals...have it all in the AVENTURA!

3 - New cabinet design in the AVENTURA

4 - New décor in the Aventura bathrooms, extensive storage with a rack for your accessories ... in the bathroom of the P670 TP, space equals well-being.



5 - New light fixture in living room

6 - Entrance door

7 - The essential longitudinal bed in the Aventura pacific : a large bed (length : 2m), a slatted base, shelves and a headboard, a curtain partition for a peaceful slumber... no, you aren't dreaming - you are in the permanent bedroom of the P670 TP.

Aventura



- 1 - AVENTURA rear design
- 2 - New kitchen light fixture
- 3 - A-class seat covers
- 4 - Table extension
- 5 - Aventura A-class dashboard
- 6 - Passenger side storage compartments in A-class
- 7 - New trim on entertainment center
- 8 - Heki roof
- 9 - New bunk ladder on coachbuilts with flat rungs for enhanced comfort
- 10 - Kitchen accessories and storage
- 11 - Additional heating



3 RANGES 3 DECORS

Pilote offers three different styles of cushions and curtains for you to feel at home in the Aventura, Reference and Explorateur ranges. The interior furnishings come in several colourways, giving full scope to comfort and wellbeing.



Aventura



REFERENCE



Explorateur

FABRICS & MATCHING CURTAINS IN ALL 3 RANGES



Aventura curtain design



Reference curtain design



Explorateur curtain design



Corail

Terracota

Capuchino

Belle-Ile

Quartz

Boréal

Pim's

Ambre

Music Bleu

Music Rouge

FABRICS
& MATCHING CURTAINS
IN ALL
2 RANGES

Explorateur *REFERENCE*



Arizona



Noisette



Reference curtain design



Explorateur curtain design

FABRICS
& MATCHING
CURTAINS RANGE

Explorateur



Cuir Rouge



Cuir Marine



Cuir Marron



Cuir Beige



Cuir Ardoise



Cuir Taupe



Explorateur curtain design

PILOTE

FROM THE DRAWING BOARD TO DELIVERY
EXPECT THE BEST

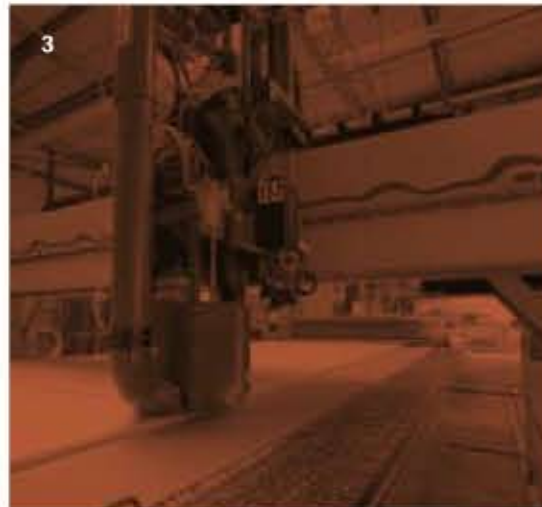


1962 - 2007

For 45 years, PILOTE has turned its skills in the service of the customer. Technology, quality, service, security, innovation, expertise... These are the key elements of an industry devoted to environmental solutions.

PILOTE is committed, working to design, create and produce, and continuously developing with generations of professionals.

With this new spirit, PILOTE 2008 is the leading specialist in Europe for the design, delivery, and is committed to providing quality manufacturing, safety, customer and value.



- 1. Introduction of sandwich panels (metal sheet / insulation / plaster)
- 2. High-pressure digital coating of insulation panels (ultra-thinness)
- 3. Control coating of sandwich panels (numerically controlled)



- 4. Preparation bonding panels
- 5. Spray coating automatically and uniformly with adhesive
- 6. Controlled tension through rollers adapted for absorption and expansion zones
- 7. Clamped storage





1.2 Finishing works done to standard (21 inches)

2. Storage of front A-class vehicle on both axles, adapted to transport

4. Preparation, positioning and locking of the electrical equipment (central console)

5. Installation of battery in central location



FIAT CHASSIS



FIAT Chassis with standard cab amenities in:

AVENTURA Range (COACHBUILTS - LOW-PROFILES - GALAXY)

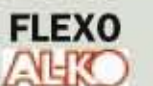
Engine Specs : 2L2 100 HP 33 L P610 FP
2L3 130 HP FIAT 35L
3L0 160 HP FIAT 35L

- Central door-locking with remote control
- Electrically adjustable side mirrors with power defrost
- Electric cab windows
- Double-leaf rear suspension and anti-rolling torsion bar
- Tinted windows
- ABS with electronic stability control
- Driver's airbag
- Special low-ride motorhome chassis
- Wide rear track 1980 mm
- Vertical adjust driver's/passenger seats
- Driver's/passenger seats with armrest
- Wheeltrims
- Anti-puncture sealing kit
- Driver's side power windows (GALAXY)
- Central armrest on driver's/passenger seats (GALAXY)

REFERENCE Range : (LOW-PROFILES)

Engine Specs : 2L3 130 HP FIAT 35L
3L0 160 HP FIAT 35L

- Central door-locking with remote control
- Electrically adjustable side mirrors with power defrost
- Electric cab windows
- Double-leaf rear suspension and anti-rolling torsion bar
- Tinted windows
- ABS with electronic stability control
- Driver's side airbag
- Special low-ride motorhome chassis
- Wide rear gauge 1980 mm
- Vertical adjust driver's/passenger seats
- Driver's/passenger seats with armrest
- Wheeltrims
- Air-conditioned cab area
- Radio/CD
- Anti-puncture sealing kit



EXPLORATEUR Range : A-CLASS

Engine Specs : - 3L0 160 HP FIAT 35L
AL-KO 3T5 (Single axle)
- 3L0 160 HP FIAT 40 H
AL-KO 4T5 (Double axle)

- Central door-locking with remote control
- Electrically adjustable side mirrors
- Electric cab windows
- Double-leaf rear suspension and anti-rolling torsion bar
- Tinted windows
- ABS with electronic stability control
- Special low-ride motorhome chassis
- Wide rear track 1980 mm
- Vertical adjust driver's/passenger seats
- Driver's/passenger seats with armrest
- Anti-puncture sealing kit
- Air-conditioned cab area

FIAT Ducato X2/50 Multijet

Engine	Power	BASE	Max laden weight	Max torque da/ NM	Engine speed at max torque (tr/nm)	Number of gears	Tyres
2.2 L Multijet	100 CV	33 L	3T3	250	1500	5 + 1	XC Camping 215/70R15 (15 inches)
		35 L	3T5	250	1500	5 + 1	XC Camping 215/70R15 (15 inches)
		35 H	3T5	320	2000	6 + 1	XC Camping 215/70R15 (15 inches)
2.3 L Multijet	130 CV	33 L	3T3	320	2000	6 + 1	XC Camping 215/70R15 (15 inches)
		35 L	3T5	320	2000	6 + 1	XC Camping 215/70R15 (15 inches)
		35 H	3T5	320	2000	6 + 1	XC Camping 225/75R16 (16 inches)
		40 H	4T0	320	2000	6 + 1	XC Camping 225/75R16 (16 inches)
		45 H	4T5	NC	NC	6 + 1	XC Camping 225/75R16 (16 inches)
3.0 L Multijet	160 CV	35 L	3T5	400	1700	6 + 1	XC Camping 215/70R15 (15 inches)
		35 H	3T5	400	1700	6 + 1	XC Camping 225/75R16 (16 inches)
		40 H	4T0	400	1700	6 + 1	XC Camping 225/75R16 (16 inches)
		50 H	5T0	NC	NC	6 + 1	XC Camping 225/75R16 (16 inches)



RENAULT CHASSIS



**FLEXO
ALKO**

REFERENCE Range : LOW-PROFILES AND A-CLASS

- ABS with electronic stability control
- Vertical adjust driver's/passenger seats
- Driver's/passenger seats with central armrest
- Anti-puncture sealing kit
- Air-conditioned cab area
- Radio/CD
- Cruise control

Low-Profiles : Renault Master base vehicle

Engine specs : RENAULT 2,5 L dCi 150 HP

- Central door-locking with remote control
- Electrically adjustable side mirrors with power defrost
- Electric cab windows
- Driver's side airbag
- Removable hand brake

A-class : auvent base vehicle

Engine specs : RENAULT 2,5 L dCi 150 HP

- Electric adjust side mirrors
- Driver's side electric windows

EXPLORATEUR Range : LOW-PROFILES

Renault Master base vehicle

Engine specs : RENAULT 2,5 L dCi 150 HP

- Electric windows in cab area
- Electrically adjustable side mirrors with power defrost
- ABS + ASR
- Reversing sensors
- Central door-locking with remote control
- Air-conditioned cab area
- Anti-puncture sealing kit
- Radio/CD



RENAULT Master Dci 120 ch - 150 ch

Engine	Power	BASE	Max laden weight	Max torque da/ NM	Engine speed at max torque (tr/min)	Number of gears	Pneumatiques
2.5 L	120 hp	RENAULT	375	30	1500	6 + 1	XC Camping Michelin 225/65R16 (16 Inches)
2.5 L	120 hp	RENAULT Automatic gearbox	378	30	1500	6 + 1	XC Camping Michelin 225/65R16 (16 Inches)
2.5 L	150 hp	RENAULT	375	32	1500	6 + 1	XC Camping Michelin 225/65R16 (16 Inches)
2.5 L	150 hp	RENAULT Automatic gearbox	378	32	1500	6 + 1	XC Camping Michelin 225/65R16 (16 Inches)



Mercedes-Benz



MERCEDES CHASSIS

EXPLORATEUR range: A-CLASS

MERCEDES Chassis with standard cab amenities in :

- MERCEDES SPRINTER 315 cdi 150 HP - 375
- MERCEDES SPRINTER 318 cdi 184 HP - 375

Engine specs : 2L2 150 HP G673 FP
3L0 184 HP

- Rear view camera
- Electrically adjustable side mirrors with power defrost
- Driver's side door electric windows
- Air-conditioned cab area
- Central-locking system
- ABS + ASR
- Radio/CD



MERCEDES Sprinter Cdi 315 - 318

Engine	Power	BASE	Max laden weight	Max torque da/ NM	Engine speed at max torque (tr/min)	Number of gears	Tyres
2.2 L	150 hp	Mercedes Sprinter 315 Cdi	375	33	1200	6 + 1	235/65 R16 C
3.0 L	184 hp	Mercedes Sprinter 318 Cdi	375	40	1600	6 + 1	235/65 R16 C
2.2 L	150 hp	Mercedes Sprinter 315 Cdi	3788	33	1200	6 + 1	235/65 R16 C
3.0 L	184 hp	Mercedes Sprinter 318 Cdi	3788	40	1600	6 + 1	235/65 R16 C

www.pilote.fr

THE PILOTE WEBSITE LETS YOU TRAVEL WITHOUT LEAVING YOUR HOME

All you have ever wanted to know about Pilote, its products, its history and its latest news can be found on the net. Forums, trade fairs, press releases, Pilote price guides... 24h/24h, from anywhere in the world, find the leading motorhome manufacturer on the web : www.pilote.fr

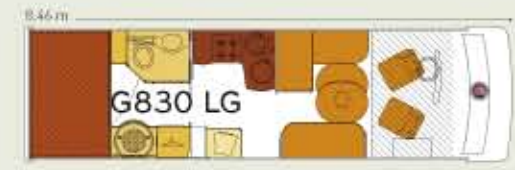


Pilote is present across Europe with over 50 dealerships in France and 40 on the European market



To ensure pleasant travels, all our motor homes are equipped with the best materials and are guaranteed airtight and waterproof for 5 years (annual inspection is mandatory). 2-year manufacturer warranty for coachwork and chassis.

Explorateur



REFERENCE



Aventura

